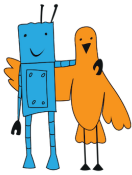


«SUMO» CONTEST RULES «INTELLECTUAL SUMO 15X15» CATEGORY

Version 1.1 dated August 7, 2019

General Provisions	2
2. Requirements for the Robot	2
3. Specifications of the Field	2
4. Contest Procedure	2
5. Violations	2
6. Scoring	2
7. Procedure for Determining the Winner	2



1. General Provisions

See the “Sumo” General Contest Rules.

2. Requirements for the Robot

For General Requirements for the Robot see the “Sumo” General Contest Rules.

Additional Requirements for the Robot:

- height - not limited;
- width - not more than 150 cm;
- length - not more than 150 mm;
- weight - not more than 1000 g.

3. Specifications of the Field

For General Field Specifications see the “Sumo” General Contest Rules.

Additional Ring Specifications

- height – 25 mm;
- diameter – 770 mm;
- width of the ring boundary – 25 mm;
- minimum external space – 500 mm.

4. Contest Procedure

See the “Sumo” General Contest Rules.

5. Violations

See the “Sumo” General Contest Rules.

6. Scoring

See the “Sumo” General Contest Rules.

7. Procedure for Determining the Winner

See the “Sumo” General Contest Rules.