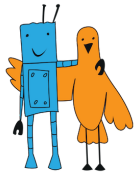


## «LINE FOLLOWER» CONTEST RULES «LEGGED ROBOTS MARATHON» CATEGORY

*Version 3.0 dated August 8, 2019*

1. General Provisions	2
2. Requirements for the Robot	2
3. Specifications of the field	3
4. Contest Procedure	3
5. Disqualification	3
6. Scoring	3
7. Procedure for Determining the Winner	3



## 1. General Provisions

For General Provisions see the “Line Follower” General Contest Rules

## 2. Requirements for the Robot

For General Requirements for the Robot see the “Line Follower” General Contest Rules.

Additional Requirements for the Robot:

- length - not more than 400 mm;
- width - not more than 400 mm;
- height - not limited;
- weight - not more than 3 kg;

There are no restrictions on the robot dimensions after the start.

The robot can follow along the line by step, jogging or jumping (in any sequence). The robot must touch the surface of the field with legs only.

The robot must not have wheels.

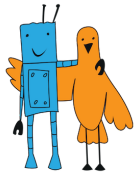
The robot must have at least one leg. The number of robot legs is unlimited.

Each leg must consist of at least two pivotally connected movable items (rigid elements).

At any time, any foot of the robot must not be above the point where the associated leg is attached to the robot’s body.

Examples of designs that are not legs:

- wheels with an open rim, with spokes or any other radial elements to create a similarity to the legs;
- chain track including in the form of traction belts with studs or roller chains with "feet" (regardless of the way of fastening);
- a "leg" (the whole or its supporting part) making full turns about some axis when moving;
- “leg” with supporting part which does not performing any movements relative to the robot’s body.



### 3. Specifications of the field

For General Specifications of the Field see the “Line Follower” General Contest Rules.

Line Specifications:

- width - 50 mm;
- length - not less than 10 m.

### 4. Contest Procedure

For General Contest Procedure see the “Line Follower” General Contest Rules. Robots are given 5 minutes to complete the task.

### 5. Disqualification

For the conditions of disqualification see the “Line Follower” General Contest Rules.

Additional conditions of attempt disqualification:

- robot has touched the field by any of its part but not by leg.

### 6. Scoring

N/A

### 7. Procedure for Determining the Winner

See the “Line Follower” General Contest Rules.