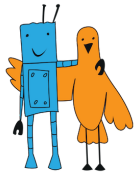


## «LINE FOLLOWER» CONTEST RULES «LINE PRO» CATEGORY

*Version **4.0** dated August 10, 2019*

1. General Provisions	2
2. Requirements for the Robot	2
3. Specifications of the Field	2
4. Contest Procedure	3
5. Disqualification	3
6. Scoring	3
7. Procedure for Determining the Winner	3



## 1. General Provisions

For General Provisions see the “Line Follower” General Contest Rules

## 2. Requirements for the Robot

For General Requirements for the Robot see the “Line Follower” General Contest Rules.

Additional Requirements for the Robot:

- length - not more than 400 mm;
- width - not more than 40 cm;
- weight - not more than 10 kg;

The length and the width of the robot may vary after the start.

## 3. Specifications of the Field

For General Specifications of the Field see the “Line Follower” General Contest Rules.

The size of the field must be not less than 2000x3000 mm.

Line Specifications:

- radius of curvature of the track - not less than 300 mm;
- color is black

The line is a sequence of homogeneous objects located along the trajectory - circles, stripes, straight continuous lines.

Circles:

- diameter - 50 mm;
- offset from the axis of the line - not more than 50 mm.

Strips:

- width - 15 mm;
- length - 70 mm;
- orientation of the stripes relative to the axis of the track line is 45 °.

Straight continuous lines:

- width - 50 mm;
- length - not less than 800 mm;

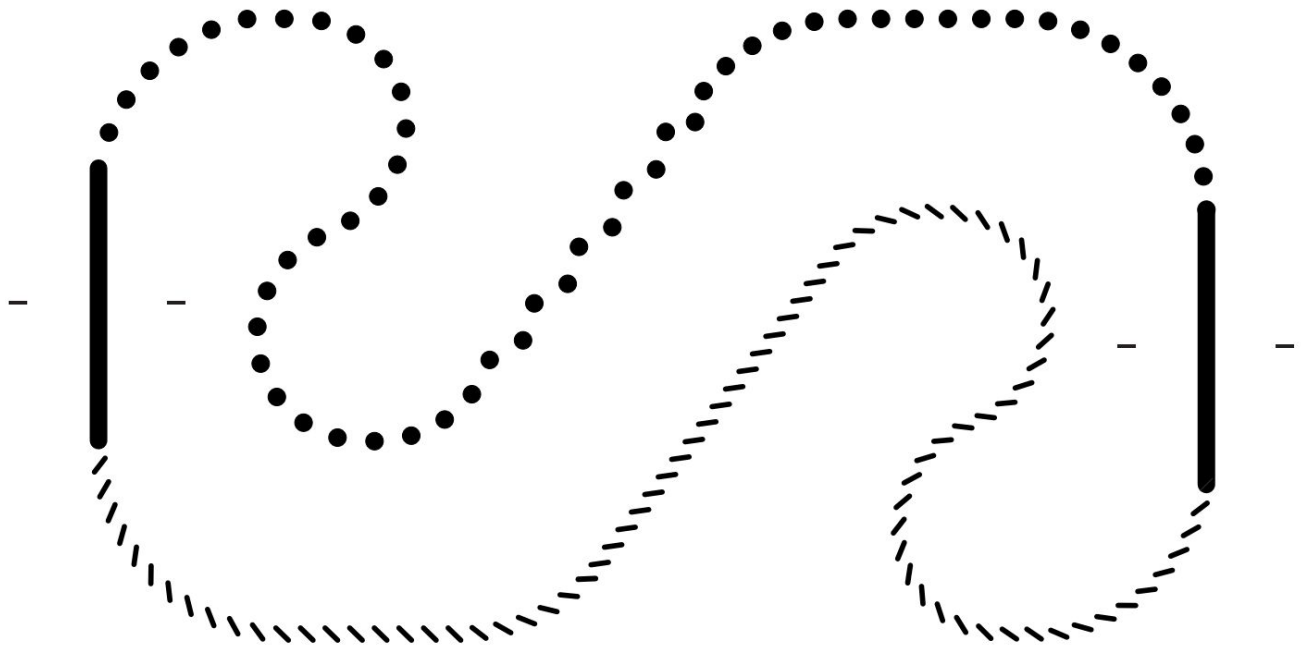
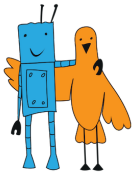


Figure 1. Field

## 4. Contest Procedure

For General Contest Procedure see the “Line Follower” General Contest Rules. Robots are given one minute to complete the task.

## 5. Disqualification

For the conditions of disqualification see the “Line Follower” General Contest Rules.

## 6. Scoring

N/A

## 7. Procedure for Determining the Winner

See the “Line Follower” General Contest Rules.